



sliding patio doors



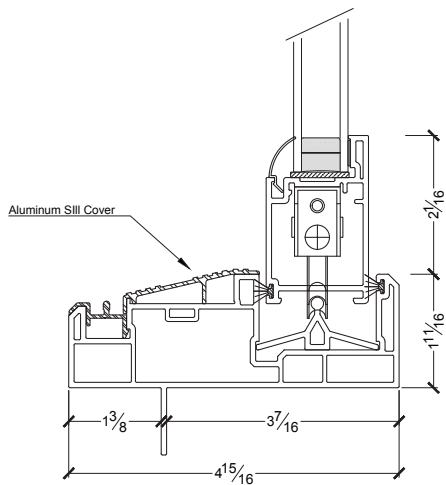
FEATURES:

- Slim profile or French profile** to suite your home and needs
- 4-point locking system** ensures optimal security and performance
- Key-lock** and child-lock available
- Aluminum threshold cover** to protect sill from damage

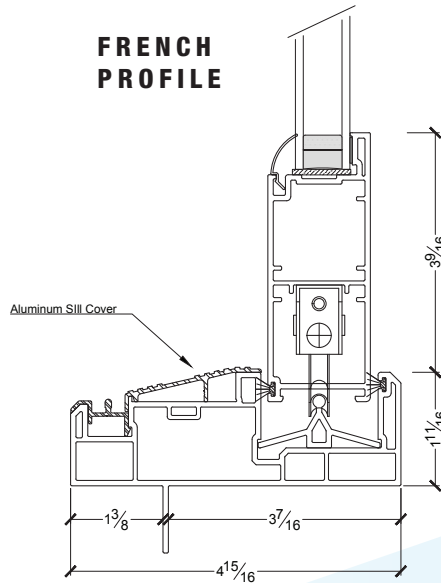
sliding patio doors

Sliding patio doors are designed to slide horizontally with one operating panel and one stationary panel. They fit into tighter spaces than our hinges doors since their panels don't interfere with your patio or living space. Patio Doors are available in our Slim profile to maximize the glass space and view or our French profile for a robust and rich feel.

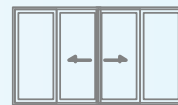
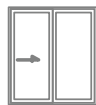
SLIM PROFILE



FRENCH PROFILE



4-point locking system



PERFORMANCE DATA

XO or OX: Light Commercial
Classification. Performance Grade = PG 35

OXO: Light Commercial
Classification. Performance Grade = PG 25

OOXO: Light Commercial
Classification. Performance Grade = PG 30

| U Value | SHGC | VT | Glazing Make Up | Performance |
|---------|------|------|--------------------|-------------|
| 1.61 | 0.32 | 0.55 | LoE-272 / Clear | Good |
| 1.57 | 0.22 | 0.49 | LoE-366 / Clear | Better |
| 1.56 | 0.21 | 0.48 | LoE-366 / LoE 180 | Better |
| 1.37 | 0.31 | 0.54 | LoE-272 / LoE i-89 | Best |
| 1.34 | 0.21 | 0.49 | LoE-366 / LoE i-89 | Best |

OTHER GLAZING OPTIONS ARE AVAILABLE

UNLIMITED LIFETIME WARRANTY ON VINYL, GLASS AND HARDWARE. INCLUDING ALL PARTS, LABOUR AND CRAFTSMANSHIP. WARRANTIES ARE TRANSFERABLE TO NEW OWNERS FOR 25 YEARS.



7533 Progress Way, Delta, BC V4G 1E7
tel. 604.946.2310 toll free. 1.888.363.7832

2031 Malaview Ave W #105, Sidney, BC V8L 5X6
tel. 778.404.1695 Open by appointment only

westcoastwindows.ca

